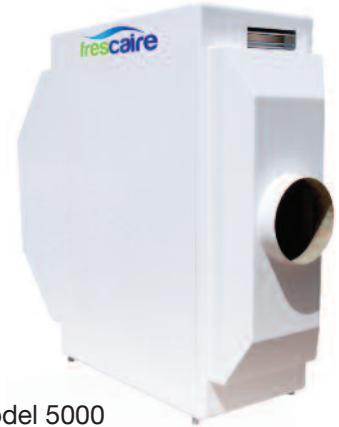




Model 1500



Model 5000

TECHNICAL DATASHEET

Model		Model 1500	Model 5000
Primary intake air at nominal output	m ³ /h	2200	7500
Discharged process air at nominal output	m ³ /h	700	2500
Cooled ventilation air at nominal output	m ³ /h	1500	5000
Inlet air conditions	°C / %RH	31,5 / 42,7	31,5 / 42,7
Supply air conditions	°C / %RH	22,5 / 72,5	23,3 / 69,1
Water consumption at nominal output	Litres / Hour	8	30

Fan

Fan type	Ziehl Abegg	GR35V-ZIK.DC.1R	GR40C-ZID.DC.1R
Fan frequency	n ⁻¹	Variable	Variable
Voltage / phase / frequency	V / n° / Hz	1~200-277V 50 / 60	3~380-480 50 / 60
Electrical consumption at nominal airflow	kW	0.37	2.1
Maximum current	A	4.5	5.4
Voltage	V	230	400
Sound production 3 metres at nominal airflow	A/M/B dB(A)	57	67.5

Dimensions

Unit dimensions with controlpanel and lock-out mounted

Width	mm	830	853
Length	mm	1.952	2.674
Height	mm	1.368	2.114

Unit dimensions with controlpanel and lock-out unmounted

Width	mm	702	725
Length	mm	1.952	2.674
Height	mm	1.368	2.114

Main air-inlet (HxW)	mm	500x500	550x550
Supply air-outlet ØD	mm	245	385
Process-air-outlet (HxW)	mm	500x100	500x100
Net. Weight	kg	135	390
Refrigerant	Type	R718	R718
Operating range	°C	15°C - 60°C	15°C - 60°C

Filter

Filter type	Vokes Air	Vokes Air
Filter class	F7	F7

Specified models and specifications are subject to change